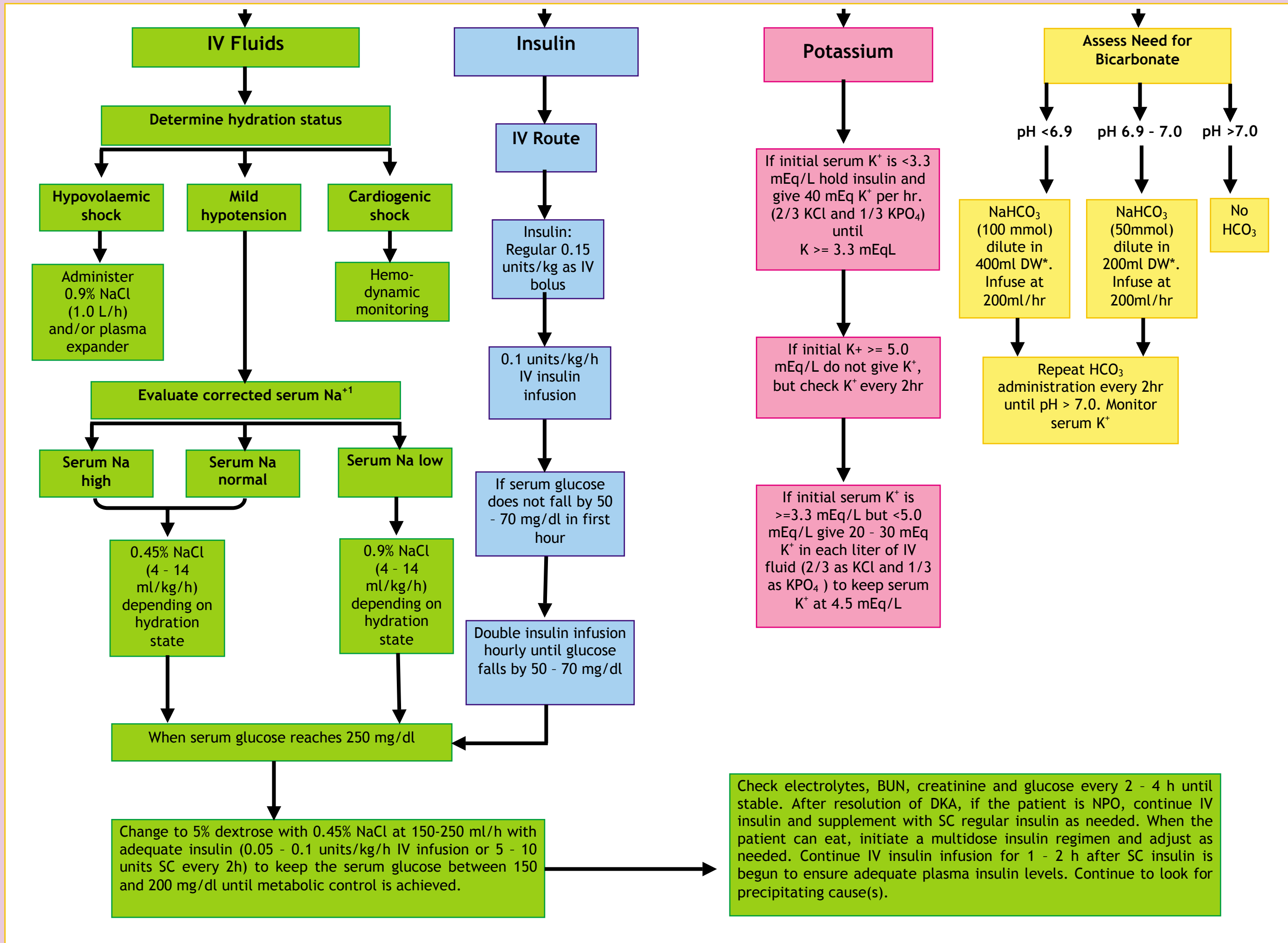


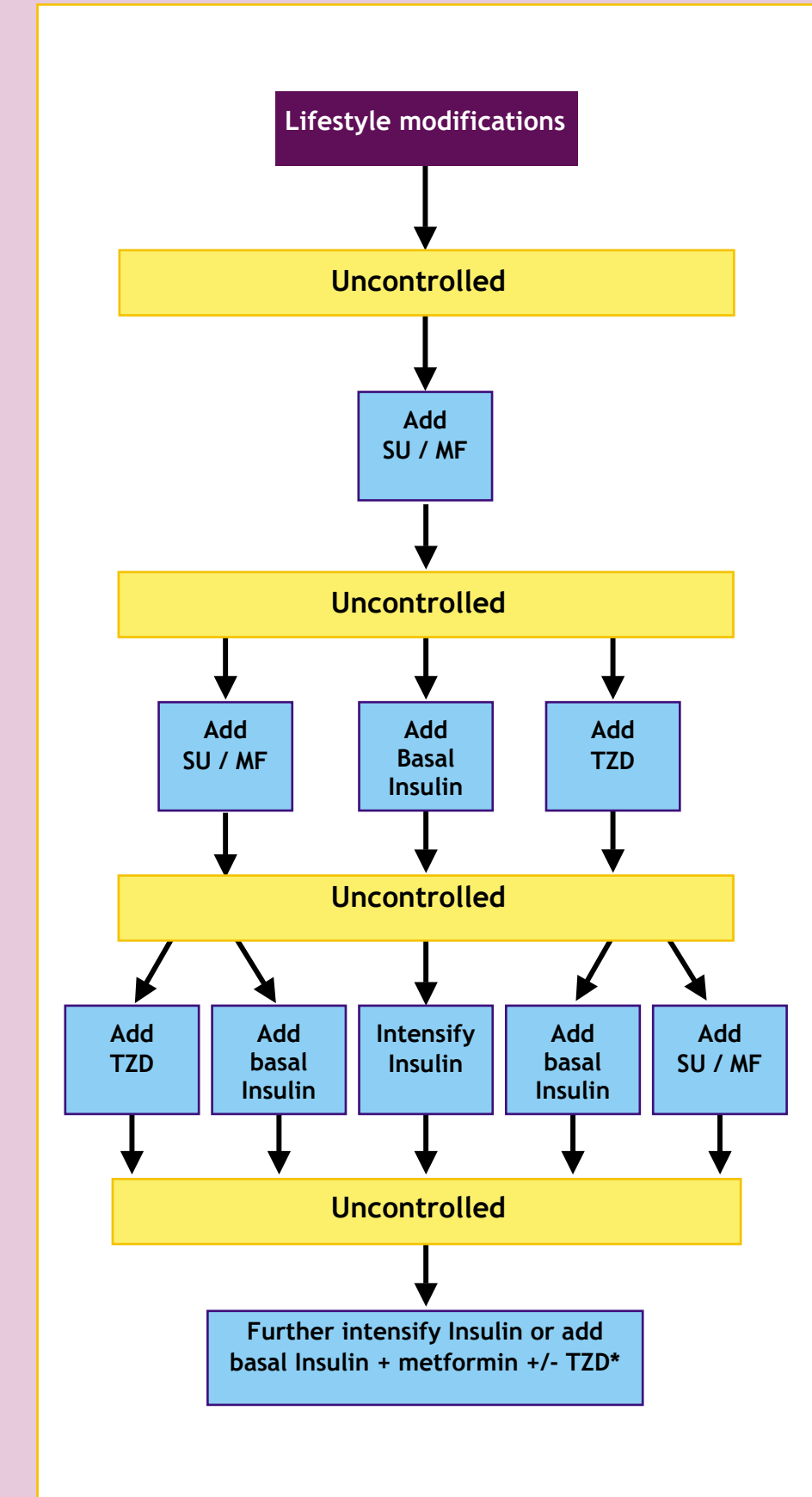
GUIDELINES FOR MANAGEMENT OF DIABETES MELLITUS

Management of adult patients with DKA

Complete initial evaluation. Start IV fluids: 1.0 L of 0.9% NaCl per hour initially (15 - 20 ml/kg/hr).



Summary of algorithm for management of hyperglycaemia in type 2 diabetes. If uncontrolled (HbA_{1c} >= 7%) move promptly to next level of therapy



Key:
 SU = sulphonylurea
 TZD = thiazolidinedione
 * TZD with insulin may worsen Cardiac Failure